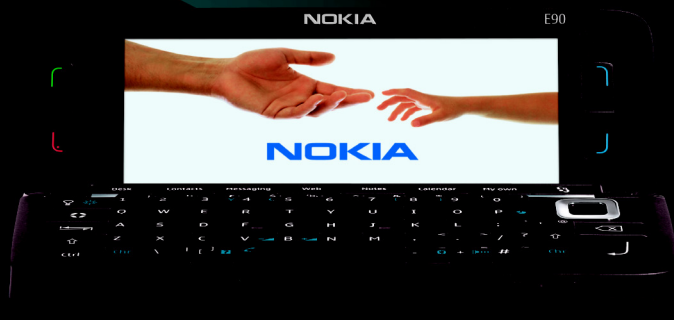


Transferring data



Nokia E90 Communicator

NOKIA
Eseries

Nokia E90 Communicator

Transferring data

Legal Notice

Copyright © 2007 Nokia. All rights reserved.

Nokia, Nokia Connecting People, Eseries and E90 Communicator are trademarks or registered trademarks of Nokia Corporation. Other product and company names mentioned herein may be trademarks or tradenames of their respective owners.

Reproduction, transfer, distribution or storage of part or all of the contents in this document in any form without the prior written permission of Nokia is prohibited.

Nokia operates a policy of ongoing development. Nokia reserves the right to make changes and improvements to any of the products described in this document without prior notice.

To the maximum extent permitted by applicable law, under no circumstances shall Nokia or any of its licensors be responsible for any loss of data or income or any special, incidental, consequential or indirect damages howsoever caused.

The contents of this document are provided "as is". Except as required by applicable law, no warranties of any kind, either express or implied, including, but not limited to, the implied warranties of merchantability and fitness for a particular purpose, are made in relation to the accuracy, reliability or contents of this document. Nokia reserves the right to revise this document or withdraw it at any time without prior notice.

The availability of particular products and applications and services for these products may vary by region. Please check with your Nokia dealer for details, and availability of language options.

Contents

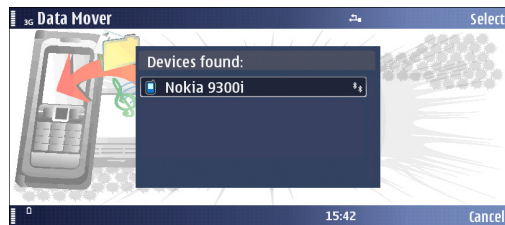
Transferring data from a previous communicator.....	4
Transferring content from another device	5
Bluetooth transfer.....	6
Infrared transfer.....	7
Changing data to transfer.....	8
Transfer via Nokia PC Suite	8
Transferring telephone numbers using a SIM card	9

Transferring data from a previous communicator

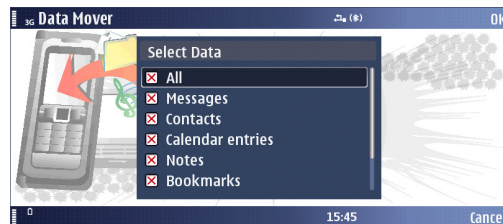
Data Mover enables you to transfer contacts, calendar entries, text messages, notes, bookmarks, recent calls, and Gallery content (images, sound and video clips) from a Nokia 9300/9300i or Nokia 9500 Communicator to your Nokia E90 Communicator using Bluetooth technology. Note that Data Mover will not transfer calendar and contacts from a memory card.

Data Mover may be found in the **Installations** folder of your Nokia E90 Communicator, or you can download a free version of it using the **Download!** application.

- 1 Activate Bluetooth on both communicators.
- 2 Start Data Mover on your Nokia E90 Communicator, and follow the instructions on the display.
- 3 Select your previous communicator from the list of found Bluetooth devices, and select to send Data Mover to the previous communicator.



- 4 On your previous communicator, open the Bluetooth message containing Data Mover from *Inbox*, and install Data Mover.
- 5 Start the Data Mover application on the previous communicator. Note that you may already have an older version of Data Mover on your communicator. Make sure that you use the new version.
- 6 From your Nokia E90 Communicator, select the data to be transferred. If you need to pair the devices, create a passcode (1–16 digits), and enter the passcode on both devices.

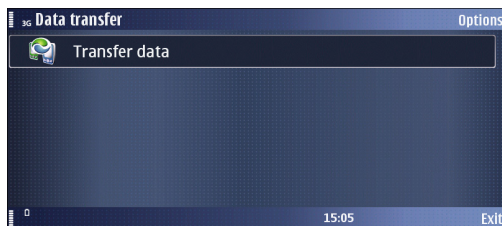


- 7 Accept the connection request in your previous communicator, and the data transfer starts.

If you only want to transfer contacts and/or calendar data from a previous communicator to a Nokia E90 Communicator, you may also use the *Transfer* application.

Transferring content from another device

Select  > *Tools* > *Transfer*.



With the Transfer application, you can transfer content from a compatible Nokia Series 60 device to your Nokia E90 Communicator using Bluetooth connectivity or infrared. The Transfer application can also be used to transfer calendar and contacts from Nokia 9300/9300i and Nokia 9500 Communicator.

The type of content that can be transferred depends on the phone model. If you transfer data from your previous phone, the phone may require you to insert the SIM card. Your Nokia E90 Communicator does not need a SIM card when transferring data.

If the other device supports synchronisation, you can also synchronise data between the other device and your Nokia E90 Communicator. For more information on

compatible devices, contact your dealer, operator, or service provider.

Using a Bluetooth or infrared connection, you can synchronise, for example, your calendar and contact entries between the two devices. The phone allows you to select the categories of data that you wish to move.


Because device models are designed differently, there may be differences in the way they handle data transfer. For example, your Nokia E90 Communicator allows you to enter a great deal of contact information for each contact. Another device model may only allow a few details per contact. If you synchronise contact information between these two devices, some of the data may be transferred to an incorrect field, and some data may not be transferred at all; for example, if a contact card contains several mobile phone numbers, only one number is transferred.

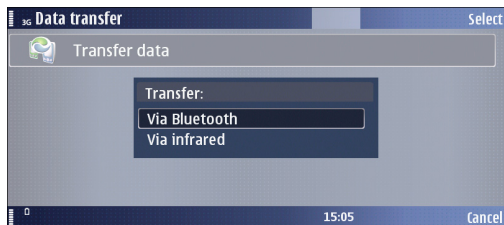


Note: All changes made to a device since the previous synchronisation are copied to the other device. This means that if you have deleted some information from a device, that information is also deleted from the other device during synchronisation.

Bluetooth transfer

To transfer data to your Nokia E90 Communicator:

- 1 Select  > *Tools* > *Transfer*.
- 2 Select *Transfer data* to begin data transfer.
- 3 Select *Via Bluetooth*. Both devices must support the selected connection type.



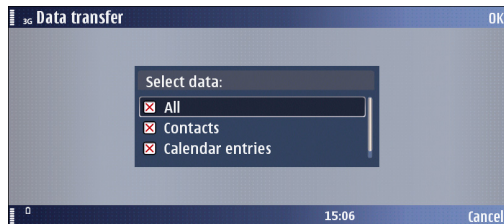
- 4 Activate Bluetooth in your other device, and select *Continue* in your Nokia E90 Communicator to start searching for devices with active Bluetooth connectivity.
- 5 Select *Stop* in your Nokia E90 Communicator after it has found your other device.
- 6 Select your other device from the list. Enter a passcode (1 to 16 digits) on your Nokia E90 Communicator, and select *OK*. The passcode is used only once to confirm this connection.

- 7 Enter the passcode on your other device, and select *OK*. The devices are now paired. For more information on pairing devices, see Nokia E90 Communicator User Guide.

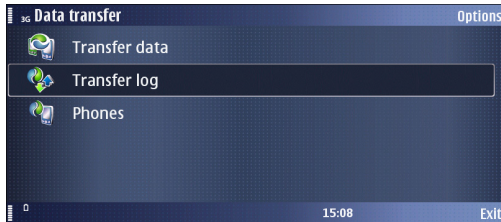


Tip: For some phone models, the *Transfer data* application is sent to your other device as a message. To install *Transfer data* on your other device, open the message, and follow the instructions on the display.

- 8 From your Nokia E90 Communicator, select the content you want to transfer from your other device, and select *OK* when you have chosen all content types you want to transfer.



Content is copied from the memory of the other device to the corresponding location in your device. Copying time depends on the amount of data to be transferred. You can also cancel and continue later. After the transfer is over, click *Close*. You can also view *Transfer log* in the *Data transfer* menu.




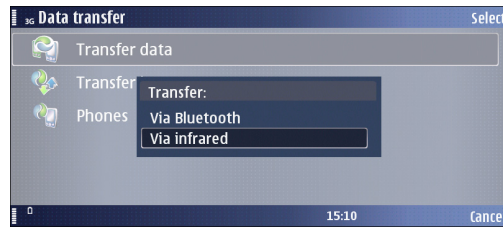
The necessary steps for data transfer may vary depending on your device, and whether you have interrupted data transfer earlier. The items that you can transfer vary depending on the other device.



Tip: Bluetooth connectivity is much faster than infrared. Its use is recommended whenever you have the choice.

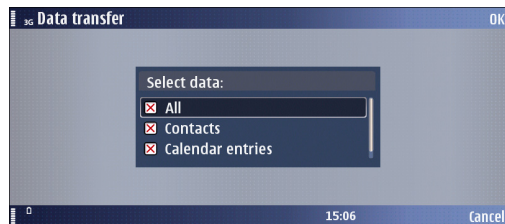
Infrared transfer

- 1 Select  > *Tools* > *Transfer*.
- 2 Select *Transfer data* to begin data transfer.
- 3 Select *Via infrared*. Both devices must support the selected connection type.



- 4 Activate infrared in the other phone (for more details, see the other phone's user guide) and press *Continue*. Wait a few seconds until an infrared connection is established.

- From your Nokia E90 Communicator, select the content you want to transfer from your other device by scrolling the list and pressing the joystick, and select *OK* when you have chosen all content types you want to transfer.




After the transfer is over, you can view *Transfer log* in the *Data transfer* menu.

Changing data to transfer

When you transfer data again via Bluetooth or infrared connection, the Transfer application uses the same settings as previously.

To change the data selected for transfer, do the following:

- Select  > *Tools* > *Transfer*.
- Select *Phones* and press the scroll key.
- Select the device you want to transfer data from, and select *Options* > *Edit*.
- Select *Sync data* and press the scroll key.

- Select items you want to transfer and select *OK*.
- Select *Back*.

Transfer via Nokia PC Suite

Another way to move data from another device is to synchronise the devices via Nokia PC Suite.

- Synchronise the other device with Nokia PC Suite.
- Synchronise Nokia E90 Communicator with Nokia PC Suite.

For detailed instructions on synchronising data with Nokia PC Suite, see the documentation on Nokia PC Suite.




Tip: You may also use the **Backup** application of Nokia PC Suite to back up data from another device and to restore any compatible data to Nokia E90 Communicator.

Transferring telephone numbers using a SIM card

You can copy all or some of the phone numbers on a GSM phone to your Nokia E90 Communicator. Duplicate contacts will be created if the same contact already exists on your Nokia E90 Communicator. These duplicate contacts can be deleted manually afterwards.

To copy telephone numbers using a SIM card:

- 1 Copy the numbers you wish to move from another GSM phone to the SIM card, following the instructions provided in the user guide of the phone.
- 2 Move the SIM card to the Nokia E90 Communicator.
- 3 On the Nokia E90 Communicator, select  > *Contacts* > *Options* > *SIM contacts* > *SIM directory* to open the SIM directory.
- 4 Mark the contacts you want to copy, or select *Mark all* to copy all contacts.
- 5 Select *Options* > *Copy to Contacts*.

Select *Options* > *SIM contacts* > *SIM directory* to see the names and numbers stored on the SIM card.

In *SIM directory* you can add, edit, or copy numbers to *Contacts*, and you can make calls.